



ASSEMBLY INSTRUCTIONS – FREE STANDING SKELETON

Your kit will come as flat pack pieces. You can paint or decorate the parts before assembly but avoid getting anything in the joints or assembly will be difficult.



HEAD ASSEMBLY

Figure 1 - HEAD

Figure 2 - HEAD



Figure 3 - HEAD



Figure 4 - HEAD



Figure 5 - HEAD



Figure 6 - HEAD



Figure 7 - HEAD



Figure 8 - HEAD



RIBS ASSEMBLY

Figure 9 - RIBS

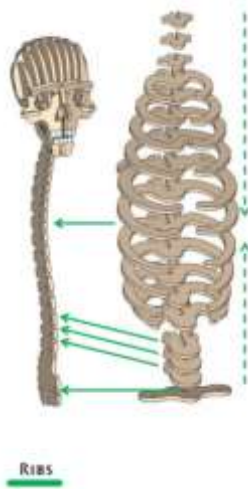


Figure 10 - RIBS

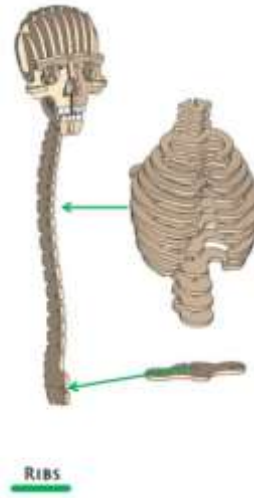


Figure 11 - RIBS



HIPS ASSEMBLY

Figure 12 - HIPS



ADD BREASTBONE

Figure 13 - BREAST BONE



Figure 14 - BREAST BONE



BACKBONE & SPINE

Figure 15 - BACK BONES



Figure 16 - BACK BONES



Figure 17 - BACK BONES



ARM ASSEMBLY

Figure 18 - ARMS



Figure 19 - ARMS



Figure 20 - ARMS



Figure 21 - ARMS



Figure 22 - ARMS



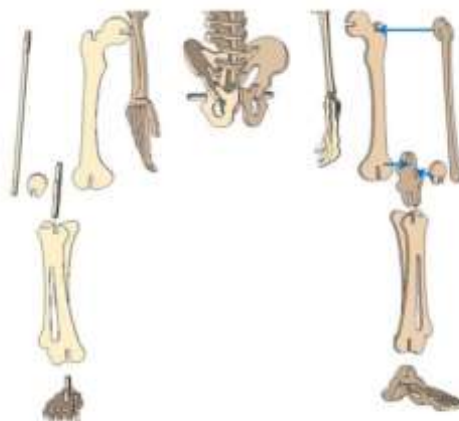
LEG ASSEMBLY

Figure 23 - LEGS



LEGS

Figure 24 - LEGS



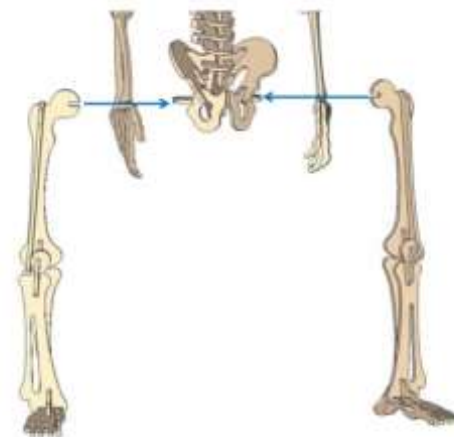
LEGS

Figure 25 - LEGS



LEGS

Figure 26 - LEGS



LEGS

Figure 27 - LEGS



LEGS

FINISHED SKELETON

